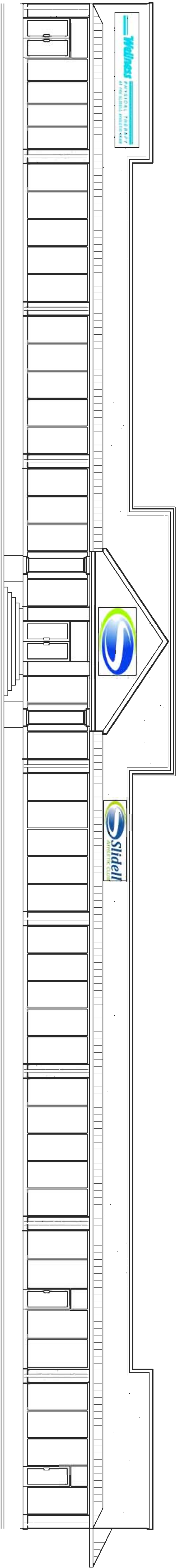


# SLIDELL ATHLETIC CLUB



## OAK HARBOR BLVD. SLIDELL, LA.

SQUARE FEET TOTAL  
BUILDING TOTAL: 15,497 SQ. FT.  
FULLY SPRINKLED

ZONED M-1  
LIGHT INDUSTRIAL

### INTERNATIONAL BUILDING CODE 2009

#### OCCUPANCY CLASSIFICATION:

ASSEMBLY, GROUP A-3 (SEC 303.1)

BUSINESS, GROUP B (SEC 304.1)

#### OCCUPANT LOAD: (TBL 1004.1.1)

BUSINESS AREAS: 100 GROSS SQ.FT. / OCCUPANT

2280 SQ.FT. = 23 OCCUPANTS

EXERCISE AREAS: 50 GROSS SQ.FT. / OCCUPANT

11,001 SQ.FT. = 221 OCCUPANTS

TOTAL LOAD = 244 OCCUPANTS

#### EXIT ACCESS REQUIREMENTS: (SEC 101.5)

2 EXITS REQUIRED FOR > 49 OCCUPANTS IN ASSEMBLY OCCUPANCY (7 EXITS PROVIDED)

1 EXIT REQUIRED FOR < 49 OCCUPANTS IN BUSINESS OCCUPANCY (7 EXITS PROVIDED)

#### EXIT TRAVEL DISTANCE REQUIREMENTS: (SEC 101.6)

EXIT ACCESS TRAVEL DISTANCE FOR BUSINESS = 300' SPRINKLED

EXIT ACCESS TRAVEL DISTANCE FOR ASSEMBLY = 250' SPRINKLED

#### CONSTRUCTION CLASSIFICATION: (SEC 602.2)

TYPE II A

#### ALLOWABLE HEIGHT AND BLDG. AREA: (TBL 503)

A-3 = 15,500 SQ.FT. / 3 STORY ALLOWED. THIS PROJECT 1 STORY / 15,497 SQ.FT.

#### FIRE RESISTANCE RATING REQUIREMENTS FOR BLDG. ELEMENTS: (TBL 601)

STRUCTURAL FRAME = 1 HR. (SPRINKLER SYST. SUBSTITUTES RATING) = 0 HRS.

BEARING WALLS (INTERIOR AND EXTERIOR) = 1 HR. (SPRINKLER SYST. SUBSTITUTES RATING) = 0 HRS.

NON-BEARING WALLS (INTERIOR AND EXTERIOR) = 0 HRS.

FLOOR CONSTRUCTION = 1 HR.

ROOF CONSTRUCTION = 1 HR. (SPRINKLER SYST. SUBSTITUTES RATING) = 0 HRS.

FIRE RESISTANCE RATING REQUIREMENTS FOR EXTERIOR WALLS: (TBL 602)

EXTERIOR WALLS WITH X-SOFT: FIRE SEPARATION DISTANCE = 0 HR.

#### FIRE ALARM SYSTEM REQUIREMENTS: (SEC 907)

THIS BLDG. DOES NOT REQUIRE A FIRE ALARM SYSTEM IN ACCORDANCE WITH 907.2.1

(GROUP A) & SEC 907.2.2 (GROUP B)

#### FIRE PROTECTION SYSTEM REQUIREMENTS: (SEC 903)

THIS BLDG. REQUIRES A FIRE PROTECTION SYSTEM IN ACCORDANCE WITH SEC 903.2.1.3

(GROUP A-3) & SEC 903.2.2 (GROUP B)

#### CONSTRUCTION DOCUMENTS: (SEC 1603)

THIS BLDG. SHALL BE DESIGNED IN ACCORDANCE WITH IBC SECTION 1609 AS A FULLY

ENCLOSED

BLDG. USING THE FOLLOWING INFORMATION:

WIND DESIGN DATA:

DETERMINATION OF WIND LOADS SHALL BE IN ACCORDANCE WITH IBC SEC 1609.4

BASIC WIND SPEED (3 SECOND GUSTS) = 130 MPH (FIG. 1609)

IMPORTANCE FACTOR: CATEGORY II BLDG., IE = 1.00, IS = 1.0, IW = 1.00 (TBL

1604.5)

EXPOSURE B

DESIGN WIND PRESSURE (ASCE 7-05 FIG. 6-2): 33.6 PSF

INTERNAL PRESSURE COEFFICIENT (ASCE 7-05 FIG. 6-5): ± 0.18

LIVE LOADS: (TBL 1607.1)

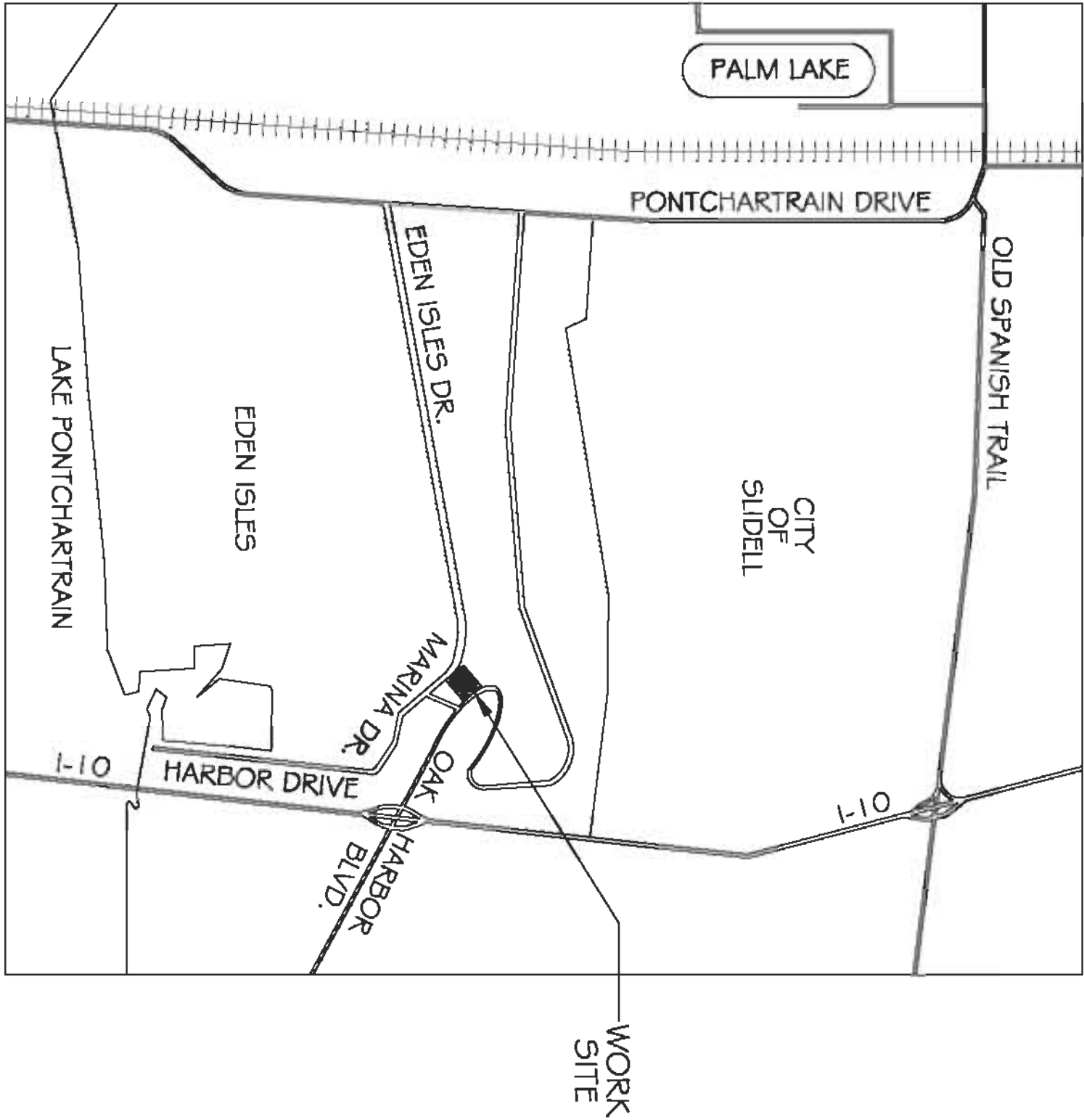
GYM MAIN FLOOR: 100 PSF

OFFICE: 50 PSF

ROOF LIVE LOAD (TBL. 1607.1) = 20 PSF UNIFORM, 300 LB. CONCENTRATED

GROUND SNOW LOAD (FIG. 1608.2) = 5 PSF

BASED ON THE SURVEY OF THIS PROPERTY BY HUGH MCGURDY III LIES IN THE FEMA ZONE  
A10 ELEVATION 11.0' PER F.I.R.M. COMMUNITY MAP NO.225205 PANEL NO. 0535  
SUFFIX 'B' DATED APRIL 2,1991.



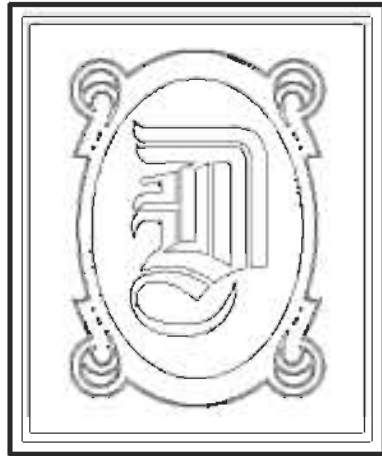
### VICINITY MAP N.T.S.

#### DETAILED BUILDING REQUIREMENTS (MAIN WIND FORCE RESISTING COMPONENTS)

- THE DESIGN, FABRICATION AND ERECTION OF STRUCTURAL STEEL FOR BUILDINGS AND STRUCTURES SHALL BE IN ACCORDANCE WITH EITHER THE AISC LOAD AND RESISTANCE FACTOR DESIGN SPECIFICATION FOR STRUCTURAL STEEL BUILDINGS (AISC-LRFD), AISC SPECIFICATION FOR STRUCTURAL STEEL BUILDINGS-ALLOWABLE STRESS DESIGN (AISC-ASD) OR AISC SPECIFICATION FOR THE DESIGN OF STEEL, TIE-BOLTS, STRUCTURAL SECTIONS (AISC-1953). WIND LOAD DESIGN OF 130 MPH.
  - ROOF COVERING HAS BEEN DESIGNED IN ACCORDANCE WITH THE REQUIREMENTS SET FORTH IN IBC SECTION 1507
  - 7/16" THICK STRUCTURAL WOOD PANELS AND ATTACHMENT HARDWARE SHALL BE PROVIDED FOR BUILDING OCCUPANCY. THE PANELS SHALL BE NUMBERED FOR EACH GRADED OPENING AND SHALL BE STORED ON SITE PERMANENTLY (IBC 1609.1.2, EXCEPTION)
- CONTRACTOR NOTE:  
EACH CONTRACTOR RESPONSIBLE FOR THE CONSTRUCTION OF A MAIN WIND-FORCE-RESISTING COMPONENT OF THIS BUILDING SHALL SUBMIT A WRITTEN CONTRACTORS STATEMENT OF RESPONSIBILITY TO THE BUILDING OFFICIAL AND OWNER PRIOR TO COMMENCEMENT OF THE WORK ON THAT COMPONENT. (IBC 1709.1)

#### INDEX OF DRAWINGS

DWG#	DRAWING NAME	REVISED
C-1	COPY OF SURVEY	
C-2	SITE PLAN	
C-3	SITE UTILITY PLAN	
C-4	SITE DRAINAGE PLAN	
C-5	SITE PAVING PLAN	
C-6	SILT FENCE DETAILS	
S-1	FOUNDATION PLAN	
A-1	FLOOR PLAN	
A-2	BUILDING SECTION & DETAILS	
A-3	BUILDING ELEVATIONS	
A-4	REFLECTED CEILING PLAN	
H-1	HANDICAP NOTES	
H-2	HANDICAP NOTES	
M-1	MECHANICAL PLAN	
E-1	POWER PLAN	
E-2	LIGHTING PLAN	
P-1	PLUMBING PLAN	



**DAMMON ENGINEERING, INC.**  
554 OLD SPANISH TRAIL OFFICE: (985) 649-5832  
SLIDELL, LA 70458 FAX: (985) 641-5950  
WEBSITE: WWW.DAMMONENGINEERING.COM  
EMAIL: DAMMONENG@BELLSOUTH.NET

SLIDELL ATHLETIC CLUB  
NEW FITNESS CLUB  
OAK HARBOR BLVD.  
SLIDELL, LA

DATE: 09-28-11  
JOB NO. 2121